

## Piloted 2-Way Spool, Normally Closed, Internally Vented

Type:PD12-2233

Operating pressure: 350 bar (5000 psi)  
Proof pressure: 630 bar (9000 psi)  
Flow: 120 L/min



### Description

A screw-in, cartridge-style, pilot-operated, spool-type, internally vented, normally closed hydraulic directional valve for 2-way circuits requiring remote pilot actuation.

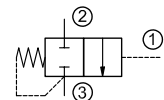
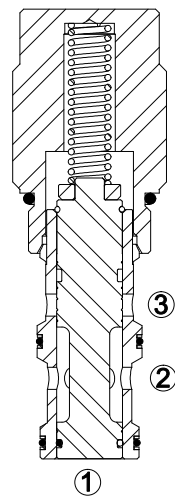
### Operation

In neutral (unpiloted), the PD12-2233 blocks flow from ② to ③. The spring bias chamber is internally vented to ③. On remote pilot signal at ①, the valve shifts to open ② to ③ uni-directionally.

Note: Back pressure at ③ will increase the pilot pressure required at ① to shift, at a ratio of 1:1. Consult factory for applications where bi-directional flow is required.

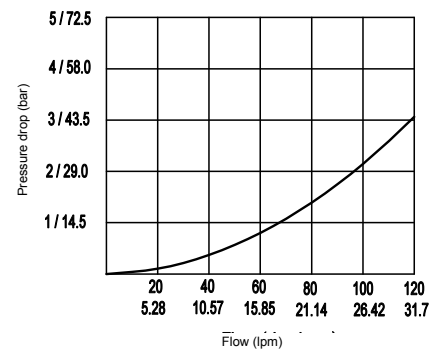
### Technical Data

<b>Operating pressure</b>	350 bar (5000 psi)
<b>Proof pressure</b>	630 bar (9000 psi)
<b>Max. flow</b>	See Performance Chart
<b>Oil volume required to full shift</b>	1.31 ml (0.08 cu. in.)
<b>Internal leakage</b>	50 ml/min (3 cu. in./min) max. at 350 bar (5000 psi)
<b>Installation torque</b>	40-47 Nm (30-35 ft.lbs)
<b>Pilot pressure required to full</b>	For 5.5 bar(80psi)spring: 5.5 bar(80psi)+ ③ pressure For 11.5 bar(167psi)spring: 11.5 bar(167psi)+ ③ pressure
<b>Temperature range</b>	-40°C ~ 120°C with standard buna seals -26°C ~ 204°C with fluorocarbon seals
<b>Fluids</b>	Mineral based or synthetics with lubricating properties at viscosities of 7.4~420cSt (50-2000ssu)
<b>Installation</b>	No restriction
<b>Cavity</b>	VC12-3
<b>Cavity tool</b>	T12-3RC (Rough), T12-3FM (Finishing)



(Symbol)

32cSt/150ssu fluid at 40°C

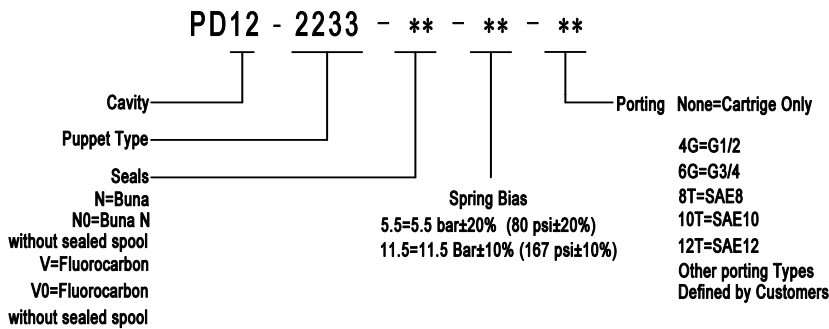


(Performance Chart)

## Features

- Hardened spool and cage for long life.
- Compact and convenience.
- Industrial general cavity.
- Range of bias springs available.

## Ordering Code



## Materials

**Cartridge:** Weight: 0.18 kg (0.41 lbs) ; Steel with hardened working surfaces and zinc-plated exposing surfaces ; Buna N O-rings and back-up (standard) .

**Standard ported body:** Weight : 1.13 kg (2.50 lbs) ; Anodized high-strength 6061 T6 aluminum alloy, rated to 240 bar (3500 psi).

**Others:** Ductile iron bodies and steel bodies available. Dimensions may differ. Contact after sale.

## Dimensions

