

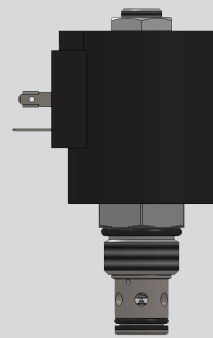
## 2-Way, Normally Closed

Type: SV10-Z2

Operation pressure: 250 bar (3600 psi)

Proof pressure: 375 bar (5500 psi)

Flow: 60 L/min



### Description

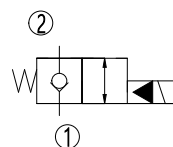
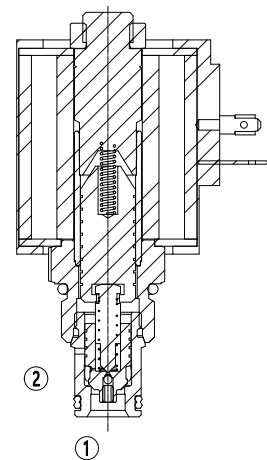
A solenoid operated, 2 way, normally closed, poppet-type, screw-in cartridge valve, designed for low leakage in load holding or blocking applications.

### Operation

When de-energized, SV10-Z2 acts as check valve, allowing flow from ① to ② and blocking flow in the opposite way. When energized, the cartridge's poppet lifts to allow the bi-directional flow.

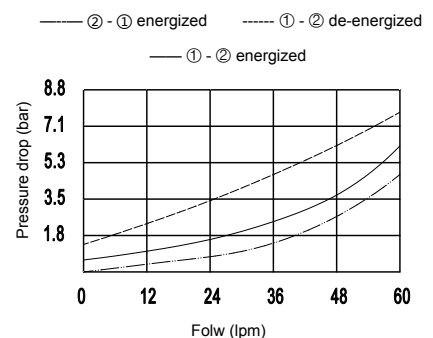
### Technical Data

<b>Operation pressure</b>	250 bar (3600 psi)
<b>Proof pressure</b>	375 bar (5500 psi)
<b>Flow</b>	See Performance Chart
<b>Internal leakage</b>	0.15 ml/min (3 drops/min) max. at 250 bar(3600 psi)
<b>Temperature range</b>	-40°C ~ 120°C with standard buna seals
	-26°C ~ 204°C with fluorocarbon seals
	-54°C ~ 107°C with polyurethane seals
<b>Coil duty rating</b>	Continuous from 85% to 115% of nominal voltage
<b>Response time</b>	First indication of change of state with 100% voltage supplied at 80% of normal flow rating, Energized: 40 ms; De-energized: 32 ms
<b>Initial coil current draw at 20°C</b>	standard Coil (22W): 12V(1.83A), 24V(0.92A)
<b>Coil models</b>	SCO116-DC12, SCO116-DC24
<b>Minimum pull-in voltage</b>	85% of nominal at 250 bar (3600 psi)
<b>Filtration</b>	See chart 1
<b>Fluids</b>	Mineral based or synthetics with lubricating properties at viscosity of 7.4-420cSt (50-2000ssu)
<b>Installation</b>	No restriction
<b>Cavity</b>	VC10-2
<b>Cavity tool</b>	T10-2RC (Rough), T10-2FM (Finishing)



(Symbol)

32cSt/150ssu fluid at 40°C



(Performance Chart)

Min. Filtration Requirement ISO 4006: 1999 SAE J1165 2µm/5µm/15µm	Max. Filtration Requirement ISO 4006: 1999 SAE J1165 2µm/5µm/15µm
20/18/14	17/15/13

(Chart 1)

## Features

- Unitized molded coil design, continuous-duty rated coil, cartridges are voltage interchangeable, optional for 24V and 12V coil voltage.
- Coil insulation grade: H, coil protection grade: IP65.
- Hardened seat for long life and low leakage.
- Efficient wet-armature construction.
- Industry common cavity.
- Compact size.

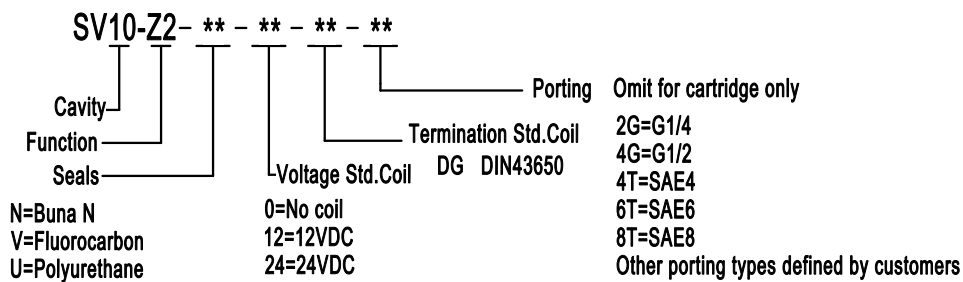
## Materials

**Cartridge:** Weight: 0.20 kg (0.44 lbs)

**Standard ported body:** Weight: 0.7 kg (1.54 lbs)

**Steel ported body:** Dimensions may differ. Contact after sale.

## Ordering Code



## Dimensions

