

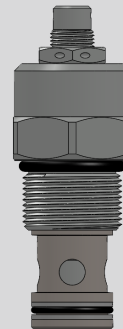
Needle Valve

Type: NV12-P0

Operating pressure: 250 bar (3600 psi)

Proof pressure: 375 bar (5500 psi)

Flow: 128 L/min



Description

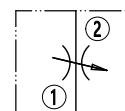
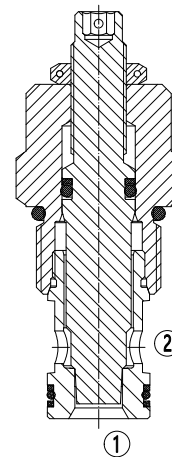
A screw-in, cartridge-type, variable orifice, flow restrictor hydraulic valve.

Operation

The NV12-P0 allows the orifice to change from fully closed to fully open with counterclockwise adjustment rotation.

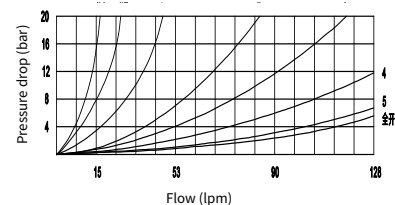
Technical Data

| | |
|-----------------------------------|--|
| Operating pressure | 250 bar (3600 psi) |
| Proof pressure | 375 bar (5500 psi) |
| Flow | 128 L/min nominal at 7 bar (101 psi) differential at full open 7 turns. |
| Internal Leakage | 0.05 ml/min(1 drops/min) max. at shut-off status |
| Adjustment torque required | 0.17 Nm (0.13 ft.lbs) at 7 bar (101 psi); 16.9 Nm (12.47 ft.lbs) at 210 bar (3045 psi) |
| Temperature range | -40°C ~ 120°C with standard buna seals -26°C ~ 204°C with fluorocarbon seals -54°C ~ 107°C with polyurethane seals |
| Fluids | Mineral based or synthetics with lubricating properties at viscosities of 7.4~420cSt (50-2000ssu) |
| Installation | No restriction |
| Cavity | VC12-2 |
| Cativity tool | T12-2RC (Rough), T12-2FM (Finishing) |
| Seal kit | SK12-2X-M |



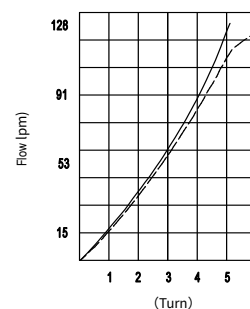
(Symbol)

32cSt/150ssu fluid at 40°C



((Performance Chart 1))

$\Delta P=7$ bar — $\Delta P=5.5$ bar---

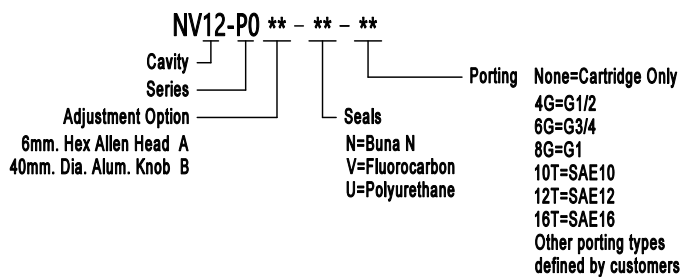


((Performance Chart 2))

Features

- Adjustment cannot be backed out of valve.
- Desired settings can be locked down.
- Linear adjustment.
- Aluminum-alloy knob option.
- Positive shut-off.
- Hardened surface for long life.
- Industry common cavity.
- Compact size.

Ordering Code



Materials

Cartridge: Weight: 0.20 kg (0.44 lbs) ; Steel with hardened working surfaces and zinc-plated exposing surfaces ; Buna N O-rings and back-up(standard).Optional for aluminum-alloy knob.

Standard ported body: Weight : 0.57 kg (1.25 lbs) ; Anodized high-strength 6061 T6 aluminum alloy, rated to 250 bar (3600 psi).

Others: Ductile iron bodies and steel bodies available. Dimensions may differ. Contact after sale.

Dimensions

