

Piloted 3-Way Spool, Vent-to-air

Type:PD16-2341

Operating pressure: 350 bar (5000 psi)

Proof pressure: 630 bar (9000 psi)

Flow: 175 L/min



Description

A screw-in, cartridge-style, pilot-operated, spool-type, internally vented, hydraulic directional valve for 3-way circuits requiring remote pilot actuation.

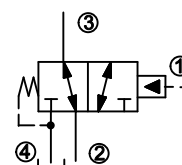
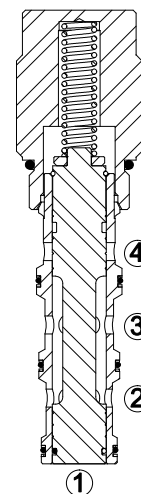
Operation

In neutral (unpiloted), the PD16-2341 allows flow from ③ to ② bi-directionally, while flow is blocked at ④. On remote pilot signal at ①, the valve shifts to open from ③ to ④, while blocking flow at ②. Since ④ is common to the spring chamber, pressure on ④ will directly (1:1) affect the pilot pressure required, and must always be added to the bias spring value.

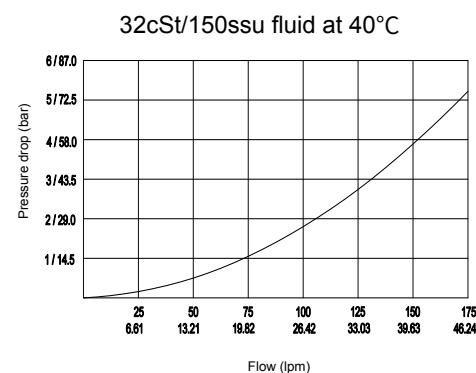
Note: Consult factory for applications where bi-directional flow from ④ to ③ is required.

Technical Data

Operating pressure	350 bar (5000 psi)
Proof pressure	630 bar (9000 psi)
Max. flow	See Performance Chart
Oil volume required to full shift	2.6 ml (0.16 cu. in.)
Internal leakage	50ml/min (3.05cu. in./min) max.at 350 bar (5000 psi)
Installation torque	61-67 Nm (45-50 ft.lbs)
Pilot pressure required to full spool shift	For 5.5 bar(80 psi)spring:5.5bar(80psi)+ ④ pressure For 11.5 bar(167psi)spring:11.5bar(167psi)+ ④ pressure
Temperature range	-40°C ~ 120°C with standard buna seals -26°C ~ 204°C with fluorocarbon seals
Fluids	Mineral based or synthetics with lubricating properties at viscosities of 7.4~420cSt (50-2000ssu)
Installation	No restriction
Cavity	VC16-4
Cavity tool	T16-4RC (Rough), T16-4FM (Finishing)



(Symbol)

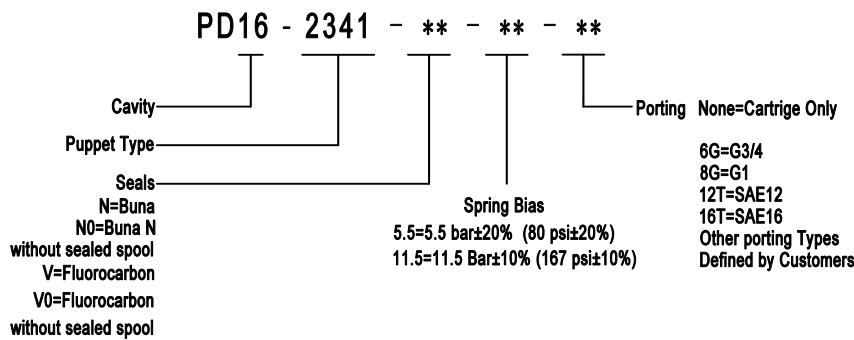


(Performance Chart)

Features

- Hardened spool and cage for long life.
- Compact and convenience.
- Industrial general cavity.
- Range of bias springs available.

Ordering Code



Materials

Cartridge: Weight: 0.74 kg (1.63 lbs) ; Steel with hardened working surfaces and zinc-plated exposing surfaces ; Buna N O-rings and back-up (standard) .

Standard ported body: Weight : 1.31 kg (2.89 lbs) ; Anodized high-strength 6061 T6 aluminum alloy, rated to 250 bar (3600 psi).

Others: Ductile iron bodies and steel bodies available. Dimensions may differ. Contact after sale.

Dimensions

