

## Piloted 3-Way Spool, Internally Vented

Type:PD10-2341

Operating pressure: 350 bar (5000 psi)

Proof pressure: 630 bar (9000 psi)

Flow: 50 L/min



### Description

A screw-in, cartridge-style, pilot-operated, spool-type, internally vented, hydraulic directional valve for 3-way circuits requiring remote pilot actuation.

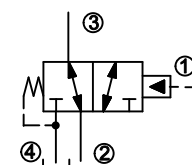
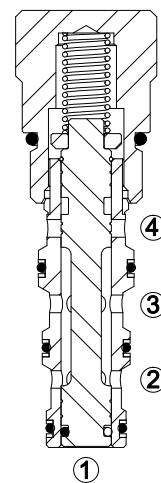
### Operation

In neutral (unpiloted), the PD10-2341 allows flow from ③ to ② bi-directionally, while flow is blocked at ④. On remote pilot signal at ①, the valve shifts to open from ③ to ④, while blocking flow at ②. Since ④ is common to the spring chamber, pressure on ④ will directly (1:1) affect the pilot pressure required, and must always be added to the bias spring value.

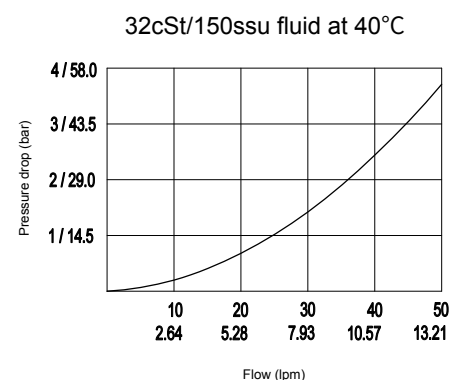
Note: Consult factory for applications where bi-directional flow from ④ to ③ is required.

### Technical Data

<b>Operating pressure</b>	350 bar (5000 psi)
<b>Proof pressure</b>	630 bar (9000 psi)
<b>Max. flow</b>	See Performance Chart
<b>Oil volume required to full shift</b>	0.4 ml (0.025 cu. in.)
<b>Internal leakage</b>	57 ml/min (3.5 cu. in./min) max.at 350 bar (5000 psi)
<b>Installation torque</b>	30-35 Nm (22-25 ft.lbs)
<b>Pilot pressure required to full spool shift</b>	For 3bar (43.5 psi) spring: 3bar(43.5 psi)+ ④ pressure For 5.5bar (80 psi) spring: 5.5bar(80 psi)+ ④ pressure For 11.5bar (167psi) spring:11.5bar(167 psi)+ ④ pressure
<b>Temperature range</b>	-40°C ~ 120°C with standard buna seals -26°C ~ 204°C with fluorocarbon seals
<b>Fluids</b>	Mineral based or synthetics with lubricating properties at viscosities of 7.4~420cSt (50-2000ssu)
<b>Installation</b>	No restriction
<b>Cavity</b>	VC10-4
<b>Cavity tool</b>	T10-4RC (Rough), T10-4FM (Finishing)



(Symbol)

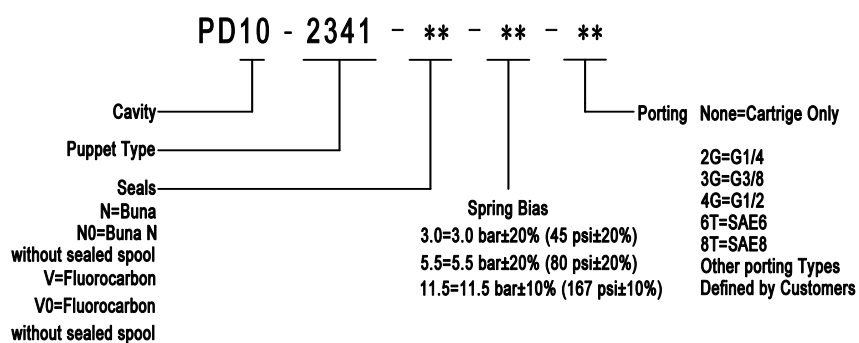


(Performance Chart)

## Features

- Hardened spool and cage for long life.
- Compact and convenience.
- Industrial general cavity.
- Range of bias springs available.

## Ordering Code



## Materials

**Cartridge:** Weight: 0.18 kg (0.40 lbs) ; Steel with hardened working surfaces and zinc-plated exposing surfaces ; Buna N O-rings and back-up (standard) .

**Standard ported body:** Weight : 0.33 kg (0.73 lbs) ; Anodized high-strength 6061 T6 aluminum alloy, rated to 250 bar (3600 psi).

**Others:** Ductile iron bodies and steel bodies available. Dimensions may differ. Contact after sale.

## Dimensions

