

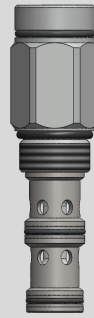
Piloted 2-Way Spool, Normally Open, Vent-to-air

Type:PD16-2230

Operating pressure: 350 bar (5000 psi)

Proof pressure: 630 bar (9000 psi)

Flow: 160 L/min



Description

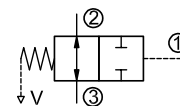
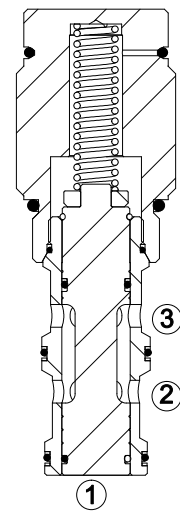
A screw-in, cartridge-style, pilot-operated, spool-type, vent-to-air, normally open hydraulic directional valve for 2-way circuits requiring remote pilot actuation.

Operation

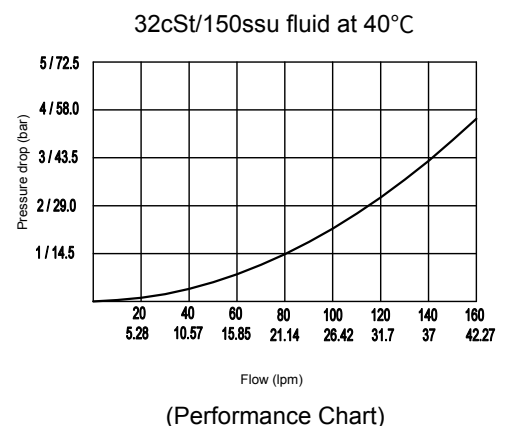
In neutral (unpiloted), the PD16-2230 allows flow from ③ to ② bi-directionally. The spring chamber vent-to-air is internally O-ring sealed from the cartridge flow paths. On remote pilot signal at ①, the valve shifts to block ③ to ② bi-directionally. Since spring chamber vent-to-air and O-ring sealed, the pilot pressure would not be affected by the pressure from ③.

Technical Data

Operating pressure	350 bar (5000 psi)
Proof pressure	630 bar (9000 psi)
Max. flow	See Performance Chart
Oil volume required to full shift	2.3 ml (0.14 cu. in.)
Internal leakage	50 ml/min (3 cu. in./min) max. at 350 bar (5000 psi)
Installation torque	61-67 Nm (45-50 ft.lbs)
Pilot pressure required to full spool shift	For 5.5 bar (80 psi) spring: 5.5 bar (80 psi)±20% For 11.5 bar (167 psi) spring: 11.5 bar (167 psi)±10%
Temperature range	-40°C ~ 120°C with standard buna seals -26°C ~ 204°C with fluorocarbon seals
Fluids	Mineral based or synthetics with lubricating properties at viscosities of 7.4~420cSt (50-2000ssu)
Installation	No restriction
Cavity	VC16-3
Cavity tool	T16-3RC (Rough), T16-3FM (Finishing)
Cap vent seal	32.5x2.65 O-ring NBR 70



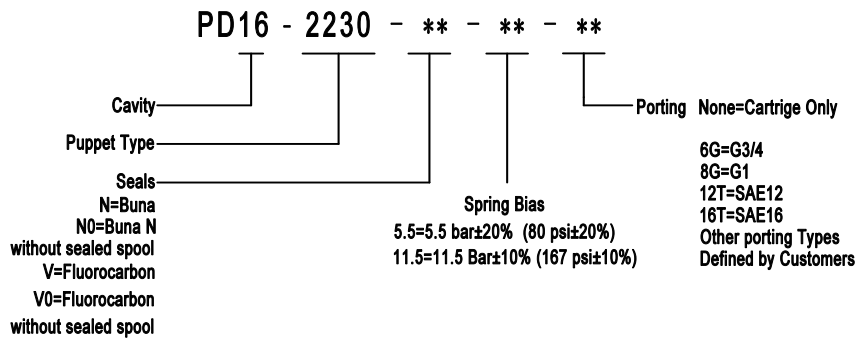
(Symbol)



Features

- Hardened spool and cage for long life.
- Compact and convenience.
- Industrial general cavity.
- Range of bias springs available.

Ordering Code



Materials

Cartridge: Weight: 0.66 kg (1.51 lbs) ; Steel with hardened working surfaces and zinc-plated exposing surfaces ; Buna N O-rings and back-up (standard) .

Standard ported body: Weight : 1.5 kg (3.30 lbs) ; Anodized high-strength 6061 T6 aluminum alloy, rated to 240 bar (3500 psi).

Others: Ductile iron bodies and steel bodies available. Dimensions may differ. Contact after sale.

Dimensions

