

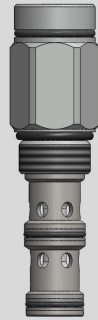
## Piloted 2-Way Spool, Normally Closed, Vent-to-air

Type:PD16-2232

Operating pressure: 350 bar (5000 psi)

Proof pressure: 630 bar (9000 psi)

Flow: 160 L/min



### Description

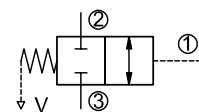
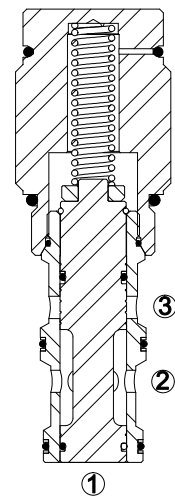
A screw-in, cartridge-style, pilot-operated, spool-type, vent-to-air, normally closed hydraulic directional valve for 2-way circuits requiring remote pilot actuation.

### Operation

In neutral (unpiloted), the PD16-3332 blocks flow from ② to ③ bi-directionally. On remote pilot signal at ①, the valve shifts to open ② to ③ bi-directionally. Since spring chamber vent-to-atmosphere and O-ring sealed, the pilot pressure would not be impacted by the pressure from ③.

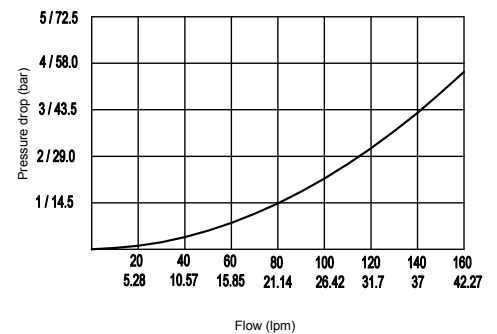
### Technical Data

<b>Operating pressure</b>	350 bar (5000 psi)
<b>Proof pressure</b>	630 bar (9000 psi)
<b>Max. flow</b>	See Performance Chart
<b>Oil volume required to full shift</b>	2.3 ml (0.14 cu. in.)
<b>Internal leakage</b>	50 ml/min (3 cu. in./min) max. at 350 bar (5000 psi)
<b>Installation torque</b>	61-67 Nm (45-50 ft.lbs)
<b>Pilot pressure required to full spool shift</b>	For 5.5 bar (80 psi) spring: 5.5 bar (80 psi)±20% For 11.5 bar (167 psi) spring: 11.5 bar (167 psi)±10%
<b>Temperature range</b>	-40°C ~ 120°C with standard buna seals -26°C ~ 204°C with fluorocarbon seals
<b>Fluids</b>	Mineral based or synthetics with lubricating properties at viscosities of 7.4~420cSt (50-2000ssu)
<b>Installation</b>	No restriction
<b>Cavity</b>	VC16-3
<b>Cavity tool</b>	T16-3RC (Rough), T16-3FM (Finishing)
<b>Cap vent seal</b>	32.5x2.65 O-ring NBR 70



(Symbol)

32cSt/150ssu fluid at 40°C

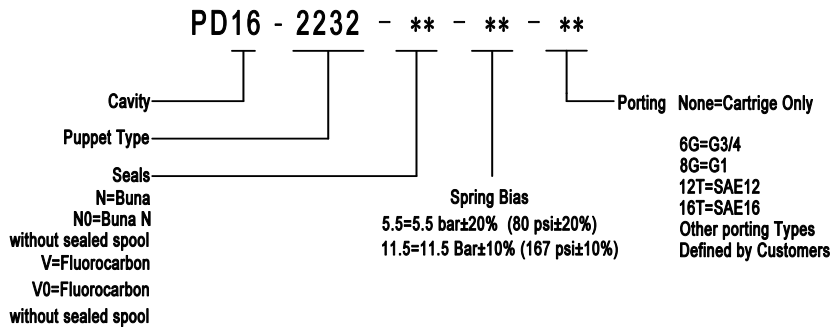


(Performance Chart)

## Features

- Hardened spool and cage for long life.
- Compact and convenience.
- Industrial general cavity.
- Range of bias springs available.

## Ordering Code



## Materials

**Cartridge:** Weight: 0.66 kg (1.51 lbs) ; Steel with hardened working surfaces and zinc-plated exposing surfaces ; Buna N O-rings and back-up (standard) .

**Standard ported body:** Weight : 1.5 kg (3.30 lbs) ; Anodized high-strength 6061 T6 aluminum alloy, rated to 240 bar (3500 psi).

**Others:** Ductile iron bodies and steel bodies available. Dimensions may differ. Contact after sale.

## Dimensions

