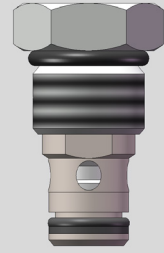


## Check Valve

Type: CV10-P1

Operating pressure: 350 bar (5000 psi)  
Proof pressure: 520 bar (7400 psi)  
Flow: 76 L/min

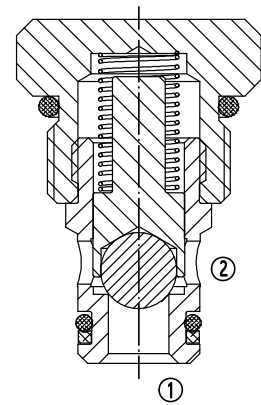


### Description

A screw-in, cartridge-style, poppet-type, ball seat hydraulic check valve for blocking or load-holding device.

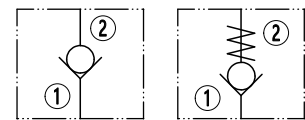
### Operation

CV10-P1 allows flow from ① to ②, and block flow in the opposite direction. The cartridge has a fully guided poppet which is spring-biased closed until sufficient pressure is applied at ①, allowing fluid flow from ① to ②.

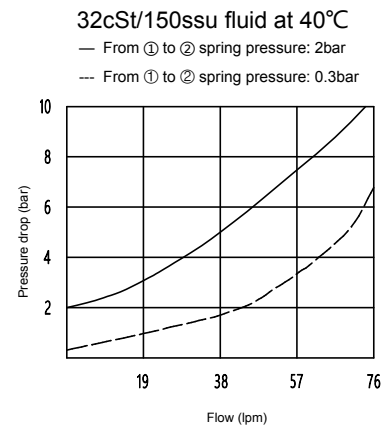


### Technical Data

<b>Operating pressure</b>	350 bar (5000 psi)
<b>Proof pressure</b>	520 bar (7400 psi)
<b>Flow</b>	See Performance Chart
<b>Internal Leakage</b>	0.1 ml/min (2 drops/min) max. at 350 bar (5000 psi)
<b>Crack pressure defined:</b>	Gauge bar evident at ① at 16.4 ml/min (1cu.in./min) attained
<b>Standard bias spring at crack</b>	0.3 bar (4 psi) / 1 bar (15 psi) / 2 bar (29 psi) / 4 bar (58 psi) / 5 bar (73 psi) / 10 bar (145 psi) / 20 bar (290 psi)
<b>Temperature range</b>	-40°C ~ 120°C with standard buna seals -26°C ~ 204°C with fluorocarbon seals -54°C ~ 107°C with polyurethane seals
<b>Fluids</b>	Mineral based or synthetics with lubricating properties at viscosities of 7.4~420cSt (50-2000ssu)
<b>Installation</b>	No restriction
<b>Cavity</b>	VC10-2
<b>Cavity tool</b>	T10-2RC (Rough), T10-2FM (Finishing)
<b>Seal kit</b>	SK10-2N-B



(Symbol-USASI) (Symbol-ISO)

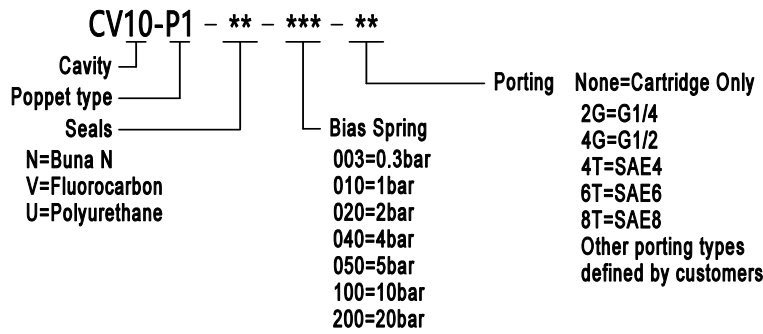


(Performance Chart)

**Features**

- Optional bias springs for back-pressure application flexibility.
- Fully guided poppet.
- Hardened seat for long life and low leakage.
- Compact size.
- Industrial general cavity.
- Quick closing.

**Ordering Code**



**Materials**

**Cartridge:** Weight: 0.08 kg (0.18 lbs) ; Steel with hardened working surfaces and zinc-plated exposing surfaces ; Buna N O-rings and back-up (standard) .

**Standard ported body:** Weight : 0.16 kg (0.35 lbs) ; Anodized high-strength 6061 T6 aluminum alloy, rated to 250 bar (3600 psi).

**Others:**Ductile iron bodies and steel bodies available. Dimensions may differ. Contact after sale.

**Dimensions**

