

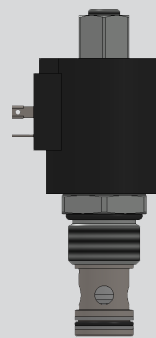
2-Way, Normally Open, Bi-Directional Blocking

Type: SV12-Z9

Operation pressure: 250 bar (3600 psi)

Proof pressure: 375 bar (5500 psi)

Flow: 115 L/min

**Description**

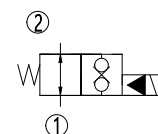
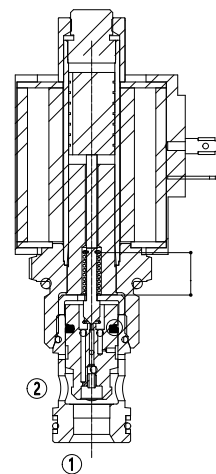
A solenoid operated, 2 way, normally open, bi-directional blocking, poppet-type, screw-in cartridge valve, designed for low leakage in load holding or blocking applications.

Operation

When de-energized, SV12-Z9 allows the bi-directional flow. When energized, the bi-directional flow is blocked.

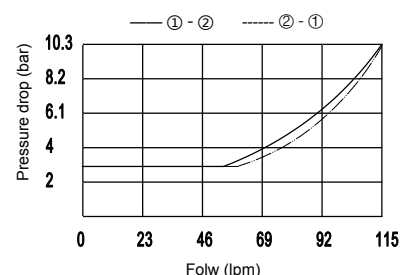
Technical Data

Operation pressure	250 bar (3600 psi)
Proof pressure	375 bar (5500 psi)
Flow	See Performance Chart
Internal leakage	0.15 ml/min (3 drops/min) max. at 250 bar(3600 psi)
Temperature range	-40°C ~ 120°C with standard buna seals
	-26°C ~ 204°C with fluorocarbon seals
	-54°C ~ 107°C with polyurethane seals
Coil duty rating	Continuous from 85% to 115% of nominal voltage
Response time	First indication of change of state with 100% voltage supplied at 80% of normal flow rating, Energized: 40 ms; De-energized: 80 ms
Initial coil current draw at 20°C	standard Coil (22W): 12V(1.83A), 24V(0.92A)
Coil models	SCO116-DC12, SCO116-DC24
Minimum pull-in voltage	85% of nominal at 250 bar (3600 psi)
Filtration	See chart 1
Fluids	Mineral based or synthetics with lubricating properties at viscosity of 7.4-420cSt (50-2000ssu)
Installation	No restriction
Cavity	VC12-2
Cavity tool	T12-2RC (Rough), T12-2FM (Finishing)



(Symbol)

32cSt/150ssu fluid at 40°C



(Performance Chart)

Min. Filtration Requirement ISO 4006: 1999 SAE J1165 2µm/5µm/15µm	Max. Filtration Requirement ISO 4006: 1999 SAE J1165 2µm/5µm/15µm
20/18/14	17/15/13

(Chart 1)

Features

- Unitized molded coil design, continuous-duty rated coil, cartridges are voltage interchangeable, optional for 24V and 12V coil voltage.
- Coil insulation grade: H, coil protection grade: IP65.
- Hardened seat for long life and low leakage.
- Efficient wet-armature construction.
- Industry common cavity.
- Compact size.

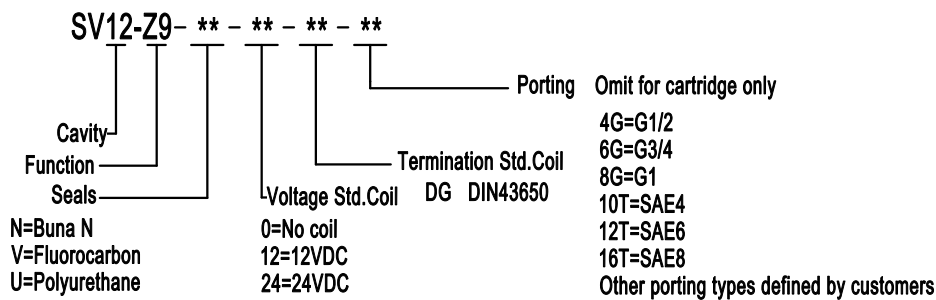
Materials

Cartridge: Weight: 0.28 kg (0.62 lbs)

Standard ported body: Weight: 0.7 kg (1.54 lbs)

Steel ported body: Dimensions may differ. Contact after sale.

Ordering Code



Dimensions

